

METRO CONNECTS

King County Metro's
long-range vision

**More
Choices**

**One
System**

**More
Service**



Port of Seattle Commission Meeting
April 12, 2016

Why now?

By 2040 King County will increase by:


850k
jobs


1m
people

We will need a Transit system that:

- Accommodates growth and demand
- Promotes equity and social justice
- Connects people to Link
- Reduces emissions
- Adopts emerging technologies

What will it take
to respond
to these needs?

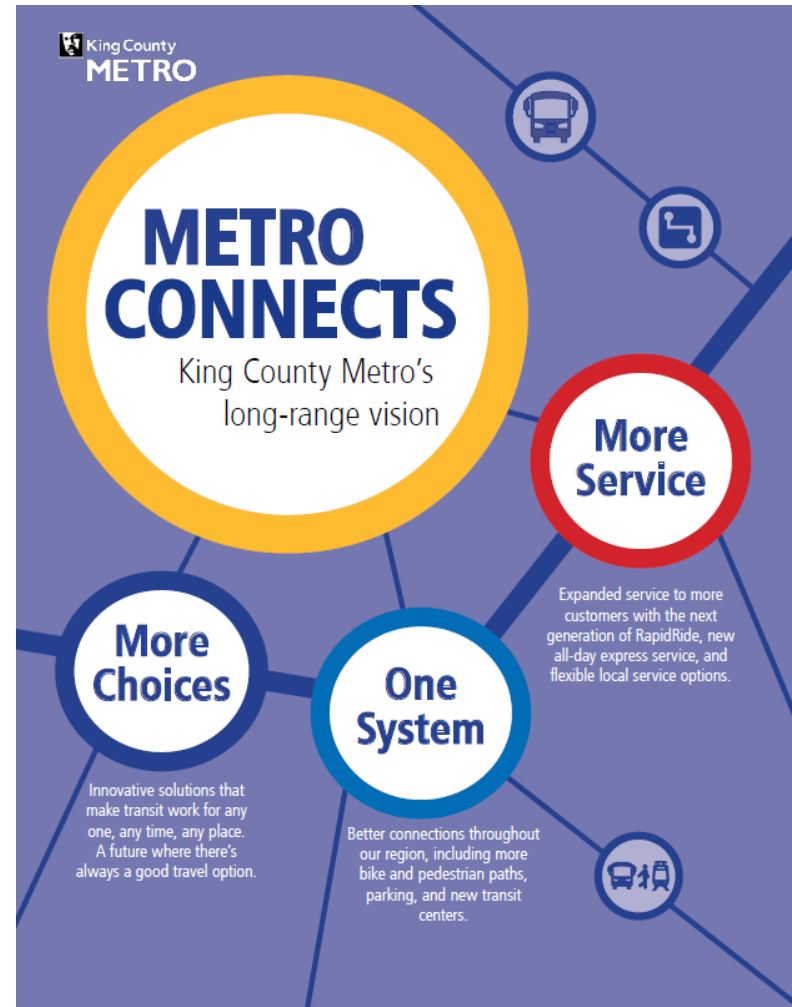
70%

GROWTH

in Metro service,
from 3.5 million
service hours to
6 million hours
by 2040.

Overview

- The Service Network
- Count on Metro
- More choices
- One system, easy to use
- What we need to succeed



Benefits Across King County



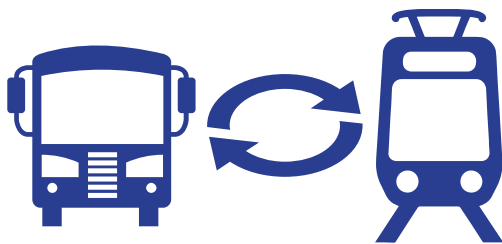
DOUBLE transit ridership

20%  **70%**

TRIPLE the percentage of people close to frequent service



In **LOW-INCOME** and **MINORITY** areas, **85%** of residents and **75%** of jobs will be close to frequent transit service



Metro buses arrive at Link stations every

1.5 MINUTES



Commuters who take transit grows from **14%** to **24%**



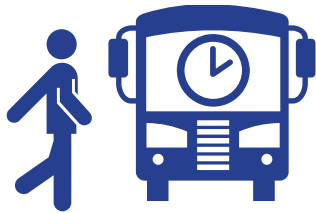
Metro helps King County meet **EMISSIONS REDUCTION** goals.

The Service Network

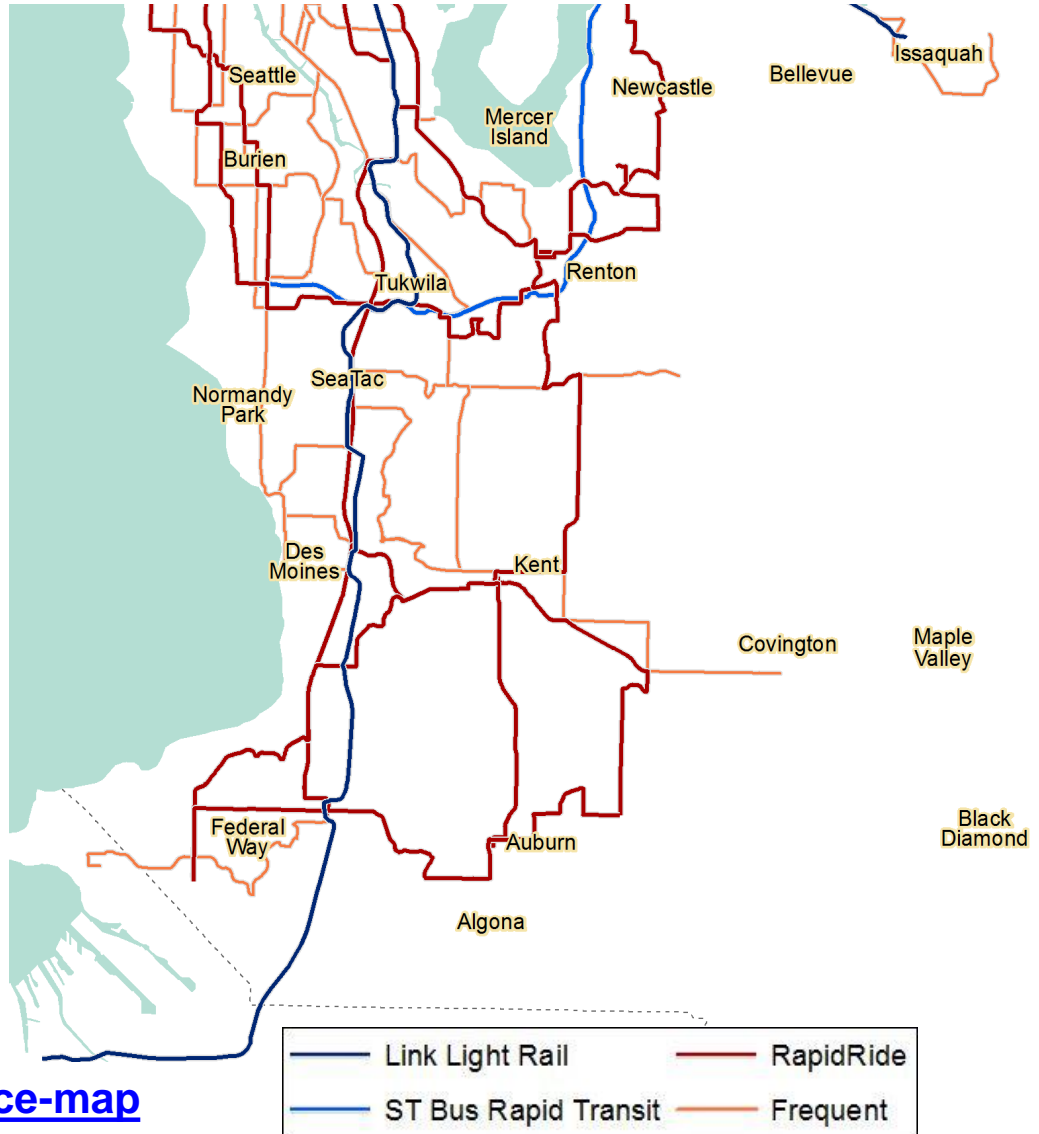


2040 Service Network

Frequent Service

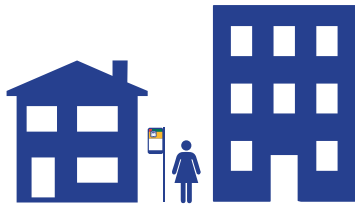


Expand **RapidRide** with 20 new lines and 300 miles of new or enhanced service.

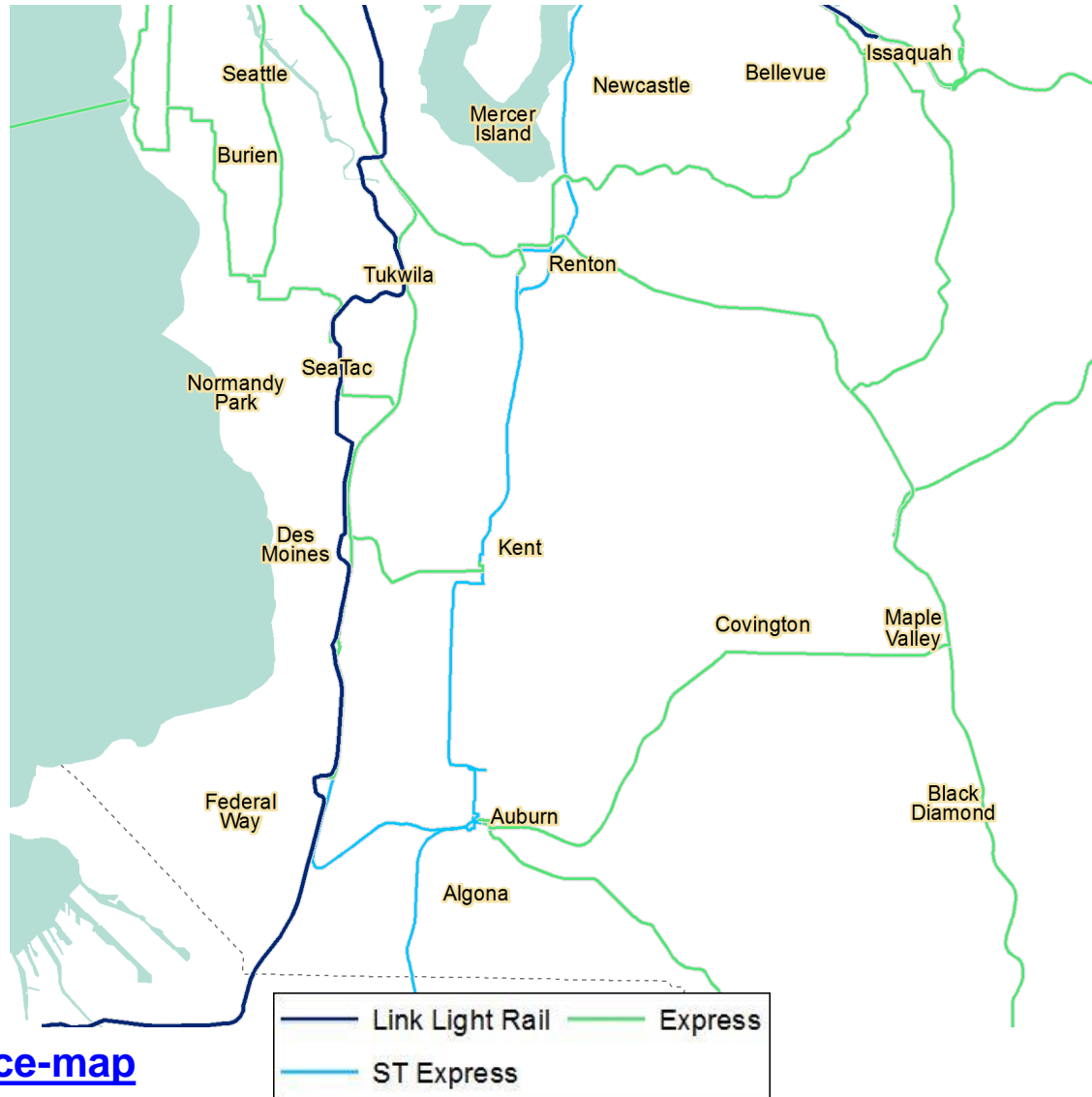


2040 Service Network

Express Service



Connect centers where many people live and work across King County

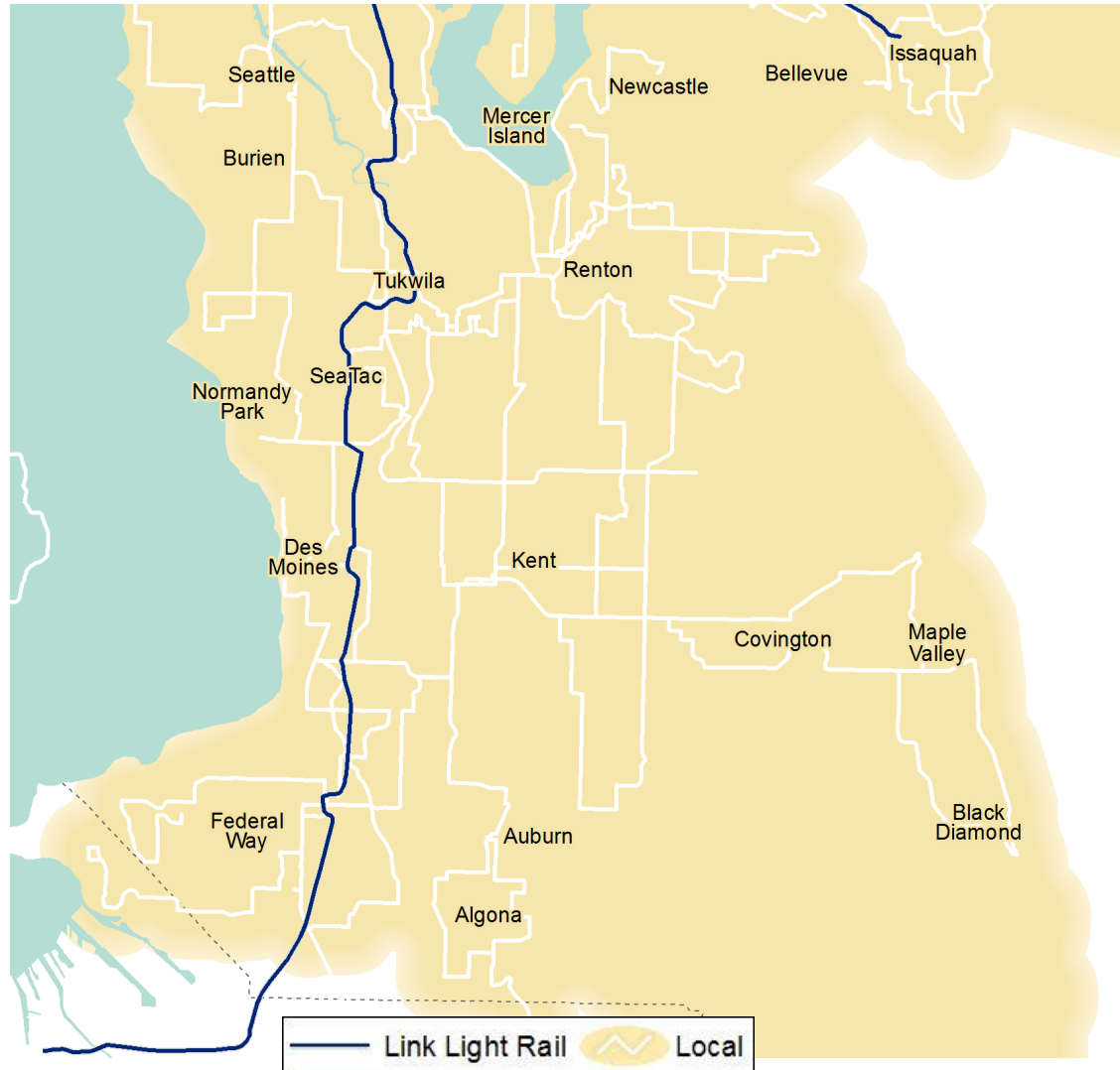


2040 Service Network

Local Service

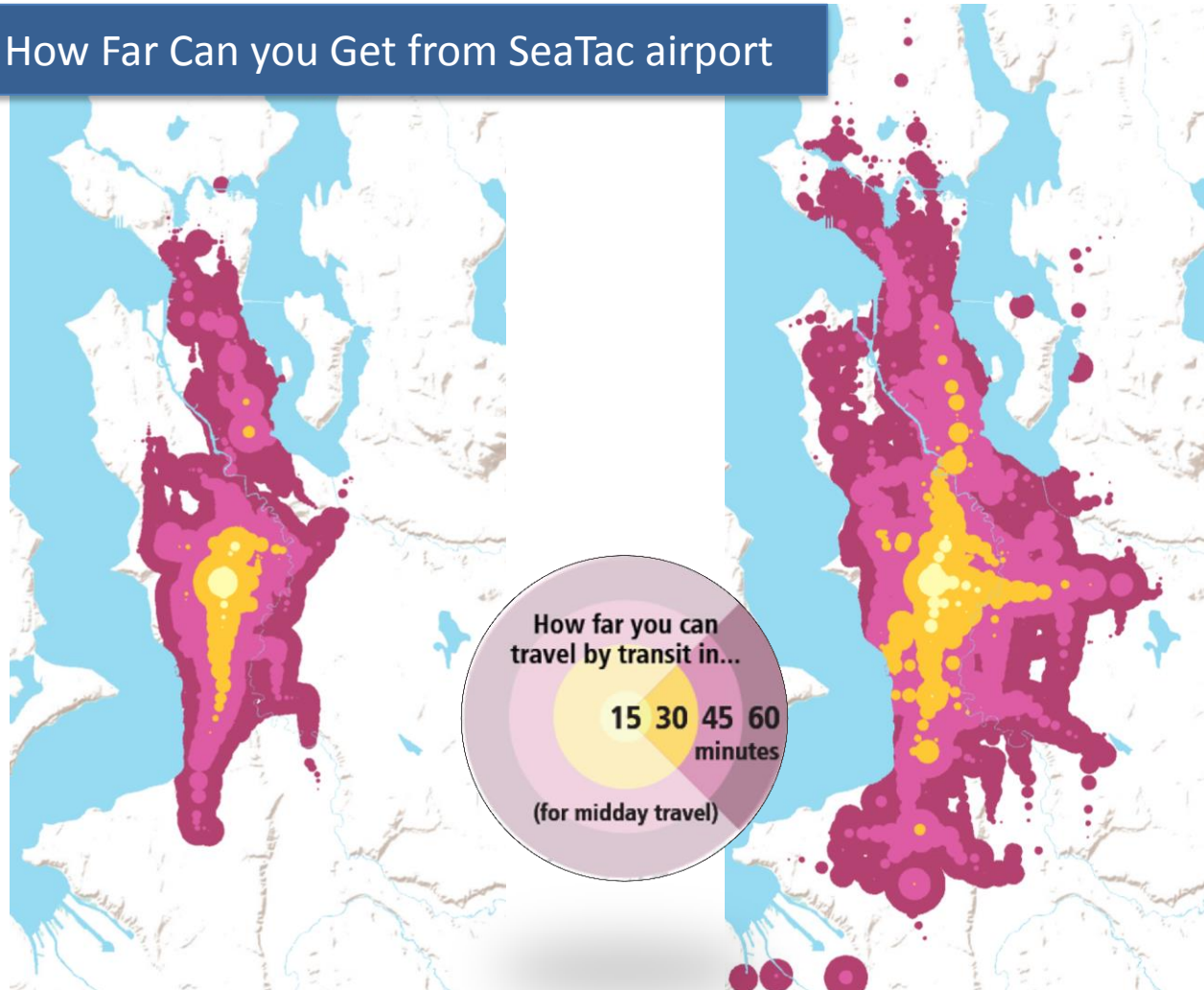


Right type of transit or alternative service for local travel and first/last mile connections



How far you can go

How Far Can you Get from SeaTac airport



Travel sheds shown on the maps above include walking time, average amount of time waiting for the bus, travel time and any transfer time. The starting point for this example is SeaTac Airport

Count on Metro

Investments to help buses run faster and stay on schedule

- Bus lanes, signal priority, off-board ORCA readers
- 600 miles of roadway investments for all service types
- Significant expansion to Metro's capital program
- Requires strong partnerships with cities



More Choices



Expanded Range of Options:

- Provide alternative services where traditional local service do not fit
- Integrate city planning and transit planning
- Develop new products through research and development
- Move toward cashless fares with ORCA 2
- Make it easier to move between Metro and other providers

One System, Easy to Use



Easy to Use

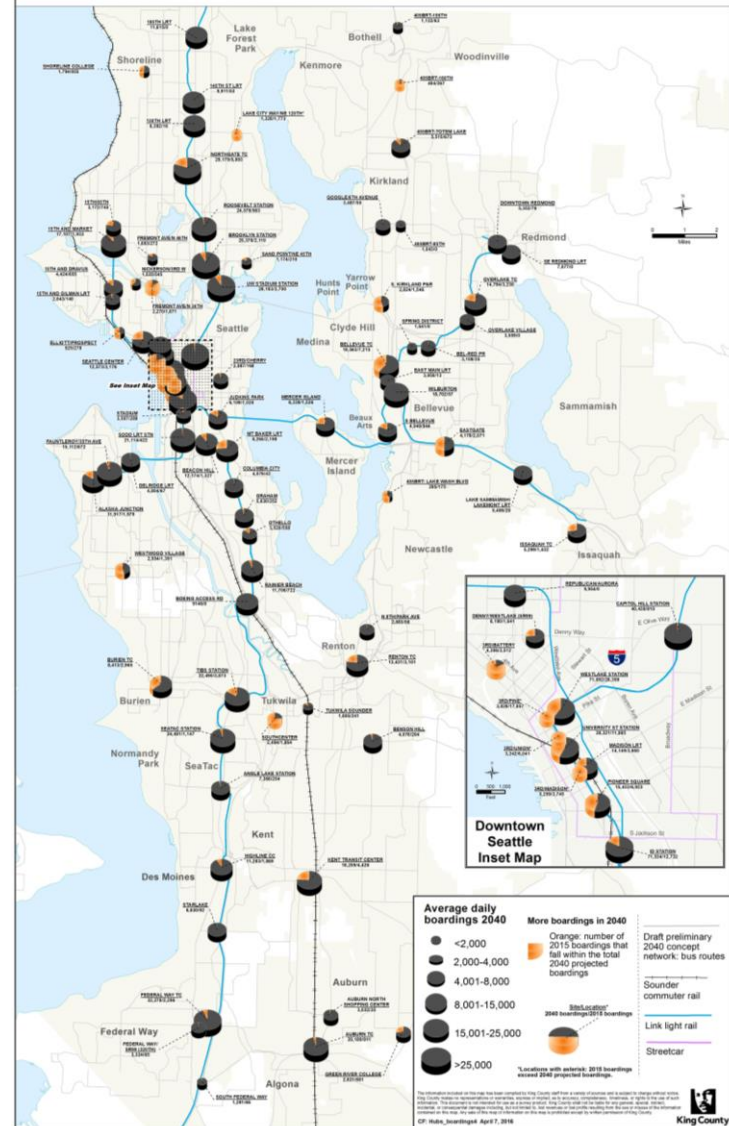
Positive experience from beginning
to end



Community Investments



Current (2015) and Projected (2040) Boardings at Major Transit Hubs & Stations



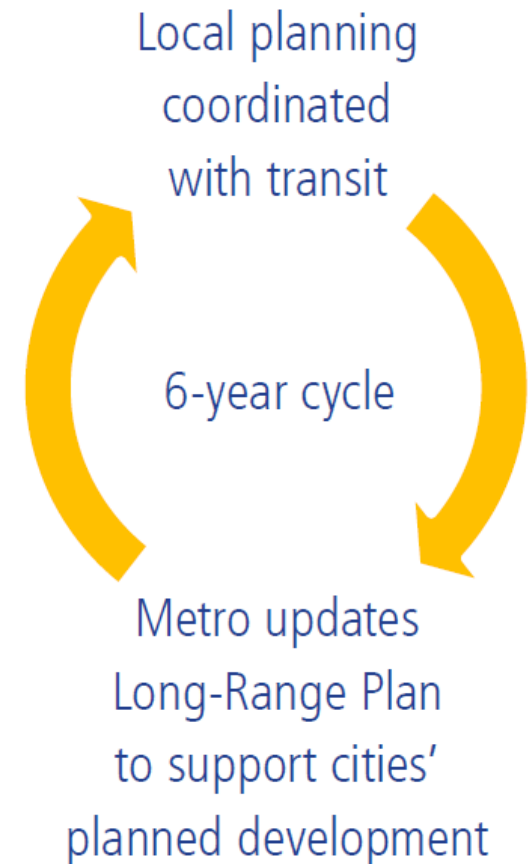
What We Need to Succeed



Investing and planning together

Transit system will require substantial capital and service investments

- Strengthen partnerships with cities, stakeholders and other transportation providers
- Work with cities to ensure improvements are a good fit for each community
- Long-range plan to support local planning and identify complementary transit service



Outreach



Visit kcmetrovision.org



Sign up for updates



Send us your comments



Attend an event



Attend a Community Advisory Committee meeting



Join the conversation on social media
#kcmetrovision



Upcoming Evening Joint Sound Transit & King County Metro open houses:

- April 19 – Ballard High School
- April 26 – West Seattle High School
- April 27 – Old Redmond Schoolhouse
- April 28 – Union Station (Daytime)
- April 28 – Todd Beamer High School (Federal Way)

A yellow Metro RapidRide bus is stopped at a bus stop. The bus has 'RAPIDRIDE' and 'METRO' branding. The bus stop has a white and red sign that says 'RAPIDRIDE'. The background shows a blue sky with clouds.

Questions?

Contact us:

Stephen Hunt

Transportation Planner

Stephen.Hunt@KingCounty.gov

206-477-5828

Tristan Cook

Community Relations Planner

Tristan.Cook@KingCounty.gov

206-477-3842